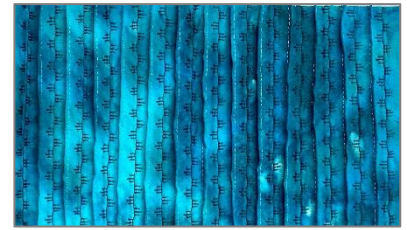



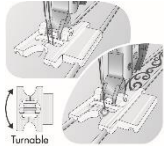






**Mystical Whimsy Quilt – Class 3a**






**Pintuck Foot with Decorative Stitch Guide**

Using the Pintuck Foot, you can accurately sew pintucks with a spacing of 5 or 11mm. The same foot allows you to precisely space decorative stitches up to 9mm wide between the pintucks.



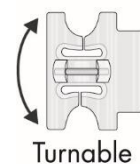
**Supplies:**

Fabric #11		1(9" x 20") for Top & Bottom Rows and Quilt Label
Pintuck Foot with Decorative Stitch Guide 		Part #820776096
Extension Table		Part number will be dependent on PFAFF® sewing machine model
PFAFF® Tear-A-Way Stabilizer 20" x 10 yards		Part #821399096
PFAFF® Topstitch Needle Size 90/14, 5 pack		Part #821196096
PFAFF® Twin Needle 2.5mm Size 80/12		Part #821203096
Robison-Anton Poly Filament Bobbin Thread		Part #140000905

Robison-Anton 40wt Rayon Thread		Part number based on color
PFAFF® 4"/10.2cm Micro Tip Straight Blade Scissor		Part #821286996
Chalk Marker		
Rotary Cutter, Mat, 6" x 24" Ruler		
SINGER® Steam Iron		Part number dependent on iron model.
Other Supplies <ul style="list-style-type: none"> <li>• Ironing Surface</li> </ul>		

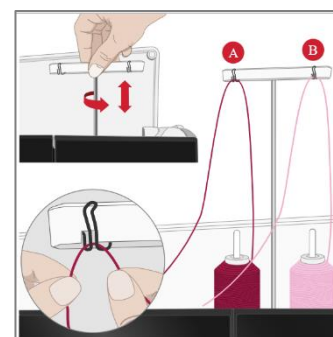
## Sewing Machine Preparations

1. Insert a PFAFF® Twin Needle 2.5mm, Size 80/12 in your PFAFF® sewing machine.
2. Select the size of the twin needle on your machine to limit the stitch width and stitch positioning. This will minimize the risk of breaking a needle when sewing with accessories that do not allow the use of the entire stitch width.
3. Attach the Extension Table, this will give you a larger sewing surface and better support for your project.
4. Attach the Pintuck Foot with Guide, note the foot can be attached with the guide pointing to the left or right.
5. Select a Straight Stitch.
6. Thread the bobbin with Robison-Anton Poly Filament Bobbin thread.
7. Thread the twin needle with Robison-Anton 40wt Rayon thread on top. Follow the threading instructions in your sewing machine User's Guide for twin needle threading.

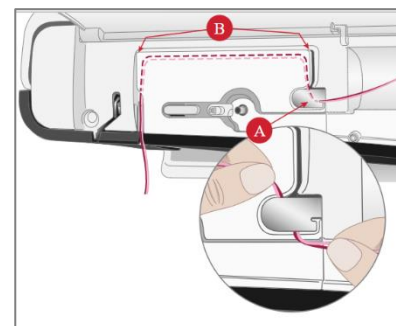


## *creative icon*™ 2 Twin Needle Threading

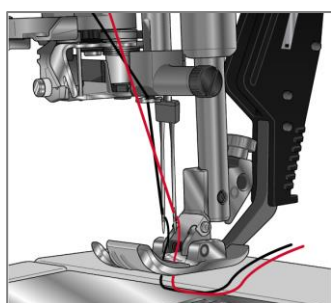
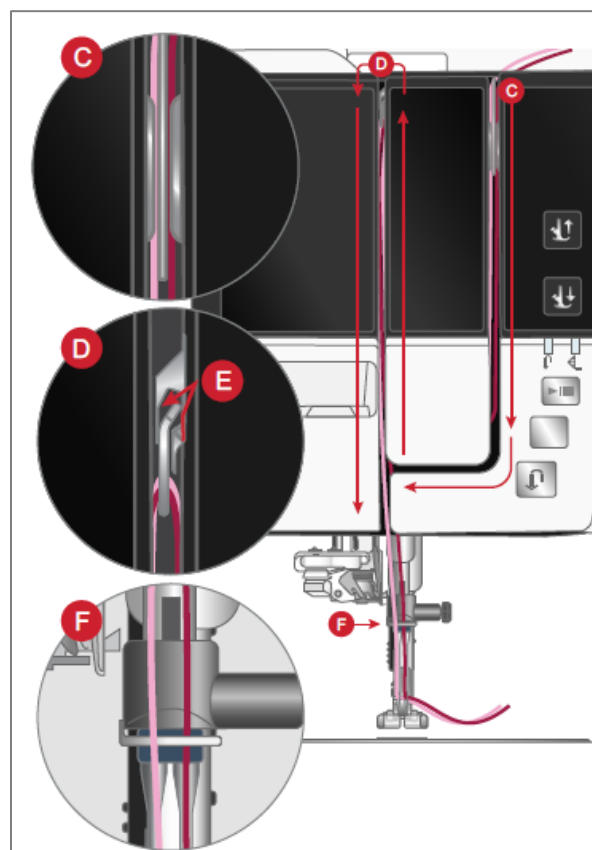
1. Raise both spool pins to vertical position. Place a thread spool on each spool pin.
2. Using both hands, place the thread from the main spool pin behind the left clip on the telescopic thread guide (A), from right to left, and then place the thread from the auxiliary spool pin behind the right clip on the telescopic thread guide (B), from right to left.



3. Hold both threads with two hands as illustrated. Floss the threads under the thread guide (A) from front to back. Pull the threads together back into and through threading slot (B).

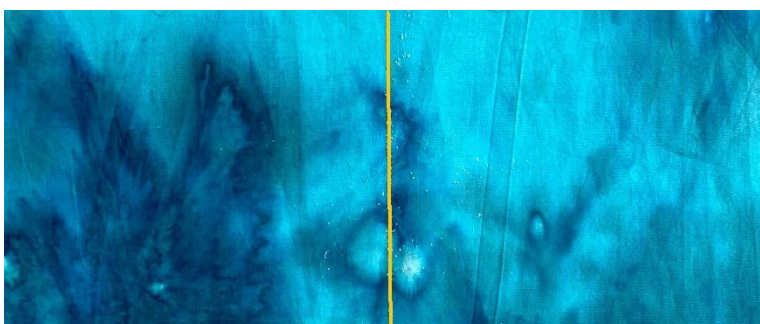


4. Pull the threads between the thread tension discs (C). Make sure that you place one thread to the left and one to the right side of the tension discs.
5. Thread down through the right threading slot and then upwards through the left threading slot. Bring the threads from the right into the take-up lever (D) until they click into place (E), and down in the left threading slot.
6. One thread should be placed inside the needle thread guide (F) and the other one outside. Make sure the threads do not become twisted together.
7. Thread the twin needle manually. Note: Do not use the automatic needle threader for threading the twin needle!



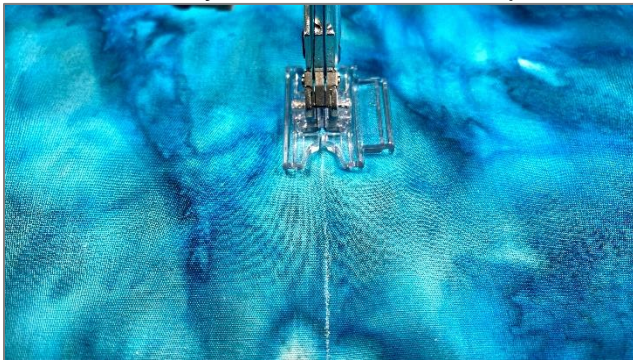
## Fabric Preparation

1. With the chalk marker, draw a line down the center of the fabric as illustrated.

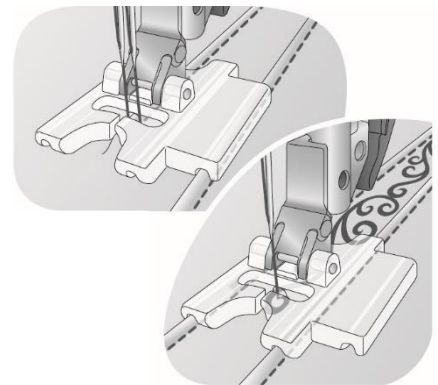
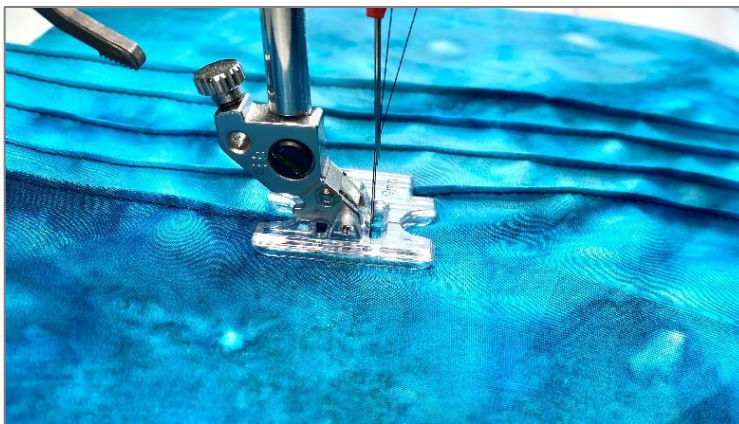


## Sewing Instructions

1. Center the presser foot on the drawn line. Stitch one row of pintucks. Sew carefully, not too fast. If your machine has a speed control reduce the sewing speed.



2. Place the first pintuck under the groove in the extended guide. Sew a second pintuck. The second pintuck will automatically be spaced to allow a decorative stitch to be sewn in the area between pintucks. Finger press each pintuck after it is stitched.



3. Continue to sew pintucks until the entire piece of fabric is stitched.



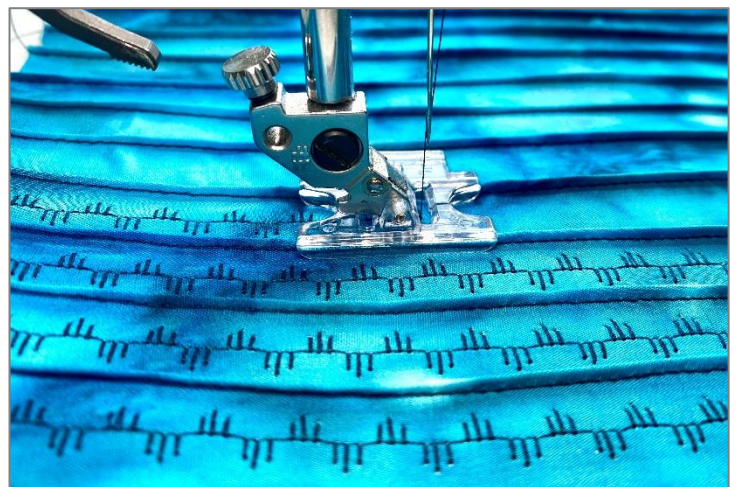
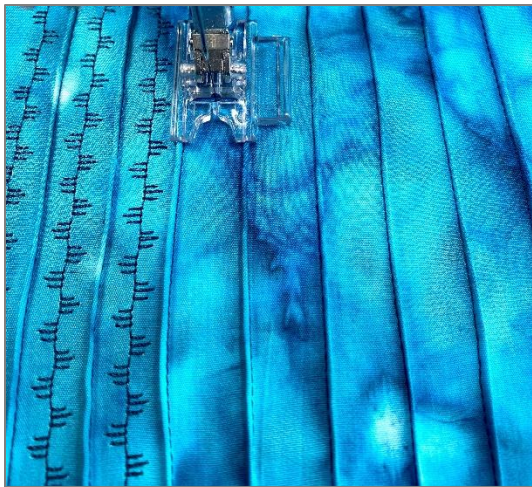
4. Press each pintuck with a SINGER® Steam Iron set on Cotton with steam.

## Sewing Machine Preparations

1. Insert a PFAFF® Topstitch Needle Size 90/14 in your PFAFF® sewing machine.
2. Thread with a different color of Robison-Anton 40wt Rayon thread on top.
3. Select a decorative stitch. Note: Decorative stitches that use forward motion work best (avoid stitches with too much backward motion).

## Sewing Instructions

1. Place the PFAFF® Tear-A-Way Stabilizer under the pintucked fabric.
2. Place the pintucks under the groove in the guides on both sides of the Pintuck Foot.
3. Stitch the decorative stitch in each row.



4. Remove the stabilizer from the back and press the pintucks to one side.
5. Cut the following:
  - 1(7" x 7") cut in half on the diagonal (Class 4)
  - 1(5" x 6") Quilt Label (Class 12b)

